

E9500

INDUSTRIAL GASOLINE GENERATOR

OPERATOR'S MANUAL



WARNING

IT IS EXTREMELY IMPORTANT TO READ AND UNDERSTAND THE ENTIRE CONTENTS OF THIS OPERATOR'S MANUAL BEFORE ATTEMPTING TO OPERATE THE PRODUCT. THIS EQUIPMENT IS POTENTIALLY HAZARDOUS AND COULD CAUSE PHYSICAL INJURY OR EVEN DEATH IF IMPROPERLY USED.

! WARNING !

DO NOT OPERATE EQUIPMENT UNTIL READING & UNDERSTANDING OPERATOR'S MANUAL!

TABLE OF CONTENTS

Safety.....	2
Operation	6
Maintenance and Troubleshooting	8
Specification & 1	

IMPORTANT WARNING SYMBOLS



Operator's Manual



Toxic Fumes



Store in Dry Place



Keep Dry



Ground Generator



Fire



Hot Surfaces



Proper Lifting



Ground Properly

The following signal words and meanings are intended to explain the level of risk associated with this product

	Indicates a hazard which, if not avoided WILL result in death or serious injury.
	Indicates a hazard which, if not avoided, could result in death or serious injury.
	Indicates a hazard which, if not avoided, could result in minor or moderate injury.

IMPORTANT SAFETY INFORMATION

MANUFACTURER SHALL NOT BE RESPONSIBLE FOR ANY CONSEQUENCES RESULTING FROM IMPROPER USE OF THIS EQUIPMENT. THE OPERATOR IS REQUIRED TO READ THE ENTIRE CONTENTS OF THIS MANUAL BEFORE ATTEMPTING TO OPERATE THE UNIT. IF THE OPERATOR DOES NOT COMPLETELY UNDERSTAND THE INSTRUCTIONS AND ALL OF THE HAZARDS OF OPERATING THIS UNIT AFTER READING THIS MANUAL, OPERATOR MUST CALL THE FACTORY TO ANSWER THESE QUESTIONS TO OPERATOR'S COMPLETE SATISFACTION BEFORE PROCEEDING.

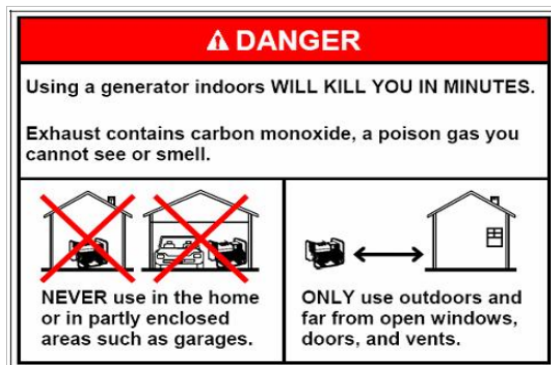
- READ AND COMPLETELY UNDERSTAND ENTIRE CONTENTS OF THIS OPERATOR'S MANUAL AND BECOME FAMILIAR WITH THE UNIT BEFORE ATTEMPTING TO START USING THIS EQUIPMENT! IT IS YOUR RESPONSIBILITY TO KNOW ITS APPLICATIONS, LIMITATIONS, AND HAZARDS! CALL THE FACTORY WITH ANY QUESTIONS.
- A MINIMUM OF THREE (3) FEET OF CLEARANCE ON ALL SIDES IS REQUIRED.
- THIS UNIT IS ONLY TO BE USED FOR ITS INTENDED PURPOSE, ANY OTHER APPLICATIONS COULD VOID WARRANTY.
- USER ACCEPTS RESPONSIBILITY FOR INJURIES AND/OR DAMAGE RESULTING FROM OTHER APPLICATIONS.
- INSPECT UNIT PRIOR TO USE FOR ANY UNSAFE CONDITIONS.
- FOLLOW ALL CODES FOR THE SAFE OPERATION OF THIS EQUIPMENT, BOTH LOCAL AND FEDERAL
- ONLY PEOPLE THAT ARE WELL ACQUAINTED WITH THE RULES OF SAFE OPERATION SHOULD USE THE GENERATOR.
- KEEP CHILDREN AWAY FROM THE UNIT.
- WEAR SAFETY GLASSES AND HEARING PROTECTION.
- DO NOT STAND ON THE UNIT OR ATTEMPT TO USE IT AS A HAND HOLD.
- REPLACE OR REPAIR ANY DEFECTIVE PARTS BEFORE USING.
- DO NOT FILL FUEL TANK IF ENGINE IS HOT.
- THE ENGINE GOVERNOR IS PRESET. DO NOT TAMPER WITH THE SETTING. EXCESSIVELY FAST SPEEDS WILL SEVERELY SHORTEN THE LIFE OF THE ENGINE AND MAY BE HAZARDOUS.

!!! FOR OUTDOOR USE ONLY !!!

NEVER USE THIS UNIT INSIDE OF ANY BUILDING, ENCLOSURE OR A RECREATION VEHICLE (RV). NO MODIFICATIONS WILL ELIMINATE THE DANGER OF POSSIBLE CARBON MONOXIDE POISONING, FIRE OR EXPLOSION

!!! WARNINGS AND CAUTIONS !!!

IN THIS MANUAL AND OR DECALS AND TAGS ON THE UNIT ARE NOT ALL INCLUSIVE. IT WOULD BE IMPOSSIBLE TO ANTICIPATE EVERY CIRCUMSTANCE THAT MIGHT INVOLVE A HAZARD HANDLING.



! WARNING !

CALIFORNIA PROPOSITION 65 WARNING:

Engine exhaust from this product contains chemicals known to the state of California to cause cancer, birth defects and other reproductive harm

! WARNING !

CALIFORNIA PROPOSITION 65 WARNING:

Battery posts, terminals and related accessories are known to the state of California to cause cancer, birth defects and other reproductive harm.

!!! REVIEW THIS MANUAL THOROUGHLY !!!

FOLLOW ALL INSTRUCTIONS PROVIDED WITHIN THIS MANUAL. THIS EQUIPMENT CAN CAUSE SERIOUS INJURY TO PEOPLE AND ANIMALS AND SEVERE DAMAGE TO PROPERTY IF OPERATED NEGLIGENTLY OR TENTIONTOALLSAFETYINSTRUCTIONS, WARNINGSANDNOTICES.

EQUIPMENT SPECIFIC WARNINGS



WARNING

Read the ENTIRE IMPORTANT SAFETY INFORMATION section at the beginning of this manual before set up or use of this product

TO PREVENT SERIOUS INJURY FROM ACCIDENTAL OPERATION:
Turn the UNIT OFF AND DISCONNECT THE BATTERY to prevent accidental starting.

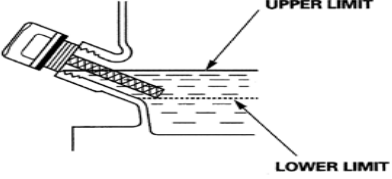
- GENERATORS PRODUCE A VERY POWERFUL VOLTAGE THAT CAN CAUSE EXTREMELY DANGEROUS ELECTRICAL SHOCK. AVOID CONTACT WITH BARE WIRES, TERMINALS, ETC. NEVER PERMIT AN UNQUALIFIED PERSON TO OPERATE OR SERVICE THE GENERATOR.
 - NEVER HANDLE ANY KIND OF ELECTRICAL CORD OR DEVICE WHILE STANDING IN WATER, WHILE BAREFOOT, WITH WET HANDS OR WHEN FEET ARE WET. DANGEROUS ELECTRICAL SHOCK COULD RESULT.
 - THE NATIONAL ELECTRIC CODE REQUIRES THAT THE FRAME AND EXTERNAL CONDUCTIVE PARTS BE PROPERLY CONNECTED TO AN APPROVED EARTH GROUND. LOCAL ELECTRICAL CODES MAY VARY. CHECK WITH AN ELECTRICIAN FOR LOCAL GROUNDING REQUIREMENTS.
 - USE A GROUND FAULT CIRCUIT INTERRUPTER IN ANY DAMP OR HIGHLY CONDUCTIVE AREA SUCH AS METAL DECKING OR STEELWORK.
 - DO NOT USE WORN, BARE, FRAYED OR OTHERWISE DAMAGED ELECTRICAL CORDS OR WIRING WITH THE GENERATOR. A DEFECTIVE CORD MAY RESULT IN ELECTRICAL SHOCK OR MAY CAUSE DAMAGE TO EQUIPMENT.
 - DO NOT EXPOSE UNIT TO EXCESSIVE MOISTURE, DIRT OR CORROSIVE VAPORS. UNIT MUST BE OPERATED ON A LEVEL SURFACE
 - ONLY OPERATE THIS UNIT OUTSIDE WITH ADEQUATE VENTILATION. THIS GENERATOR'S EXHAUST PRODUCES CARBON MONOXIDE GAS THAT CAN CAUSE UNCONSCIOUSNESS OR EVEN DEATH.
 - NEVER STORE A GENERATOR WITH FUEL IN THE TANK WHERE FUEL VAPORS COULD BE IGNITED BY A FLAME, SPARK, OR PILOT LIGHT FROM AN APPLIANCE SUCH AS A FURNACE, WATER HEATER, OR CLOTHES DRYER.
 - ALWAYS ALLOW A MINIMUM OF 3 FEET OF CLEARANCE ON ALL SIDES FOR VENTILATION WHILE UNIT IS OPERATING. ALLOW 3 FEET OF CLEARANCE FROM ALL COMBUSTIBLES.
 - GENERATOR MUST ALWAYS BE STOPPED OR STARTED WITH ALL LOADS DISCONNECTED. START THE ENGINE AND LET IT STABILIZE BEFORE CONNECTING ANY LOADS. DISCONNECT ALL LOADS BEFORE SHUTTING DOWN THE GENERATOR.
 - NEVER INSERT ANY OBJECT THROUGH THE COOLING SLOTS OF THE ENGINE. YOU COULD DAMAGE THE UNIT OR CAUSE INJURY.
- NEVER OPERATE THE GENERATOR:**
- **IN WET OR RAINY CONDITIONS**
 - **IN AN ENCLOSED COMPARTMENT**
 - **IF CONNECTED DEVICES OVERHEAT**

SPECIFICATIONS

WATTAGE REFERENCE GUIDE

Air Conditioning Unit (12,000 btu)	1700	Impact Wrench	500
Battery Charger	500	*Jet Pump	800
Belt Sander	100	Lawn Mower	1200
Chain Saw	1200	Light Bulb	100
Coffee Maker	900	Microwave Oven	700
Air Compressor (1HP)	2000	*Milk Cooler	1100
Air Compressor (3/4HP)	1800	Oil Burner on Furnace	300
Air Compressor (1/2HP)	1400	Oil Fired Space heater (140,000 BTU)	400
Curling iron	700	Oil Fired Space heater (85,000 BTU)	225
Freezer	700	Oil Fired Space heater (30,000 BTU)	150
Disc Sander	1200	*Airless Paint Sprayer (1/3 HP)	600
Edge Trimmer	500	Handheld airless Paint Sprayer	150
Electric nail gun	1200	Radio	50
Electric Range	1600	Slow Cooker	200
Furnace Fan (1/3HP)	1200	*Submersible Pump (1-1/2 HP)	2800
Hair Dryer	1200	*Submersible Pump (1 HP)	2000
Hand Drill	1200	*Submersible Pump (1/2 HP)	1500
Television	500	Sump Pump	600

OPERATION

CHECK AND FILL OIL	CHECK AND FILL FUEL	CHECK/REPLACE FILTER
<p>CAUTION DO NOT ATTEMPT TO START THE ENGINE BEFORE CHECKING OIL</p> <ol style="list-style-type: none"> 1. Place generator on a level surface. 2. Clean area around oil fill opening. 3. Remove the dipstick. 4. Wipe the dipstick clean. 5. Reinsert dipstick and check oil level. 6. DO NOT OVERFILL 6. CLOSE OIL CAP. 7. Change oil as published 	<p>WARNING DO NOT OVERFILL! LEAVE ROOM FOR FUEL EXPANSION. NEVER FILL FUEL INDOORS. NEVER FILL FUEL WHEN ENGINE IS HOT OR RUNNING. DO NOT SMOKE OR FILL</p> <ol style="list-style-type: none"> 1. Fill with gasoline fuel only 2. Clean area around fuel cap. 3. Remove fuel cap. 4. Add fuel to fuel tank. 5. DO NOT overfill. Do not fill above the red plug inside the fuel tank filter (this allows for fuel expansion) 6. Replace fuel cap. 7. Wipe up any spilled fuel. 	<p>CAUTION DO NOT CLEAN AIR FILTER WITH ANY TYPE OF DETERGENT.</p> <ol style="list-style-type: none"> 1. Remove cover panel. 2. Loosen wing nut and remove air filter cover 3. Never wash air cleaner with any kind of detergent or cleaning solvent. 4. Air filter should be changed if engine performance decreases or color of exhaust changes. 5. Never run engine without air filter. This will cause rapid engine wear.

STARTING THE ENGINE

MANUAL START

- CHECK OIL AND GAS FOR PROPER LEVELS
- TURN FUEL VALVE TO THE ON POSITION (FIGURE #3)
- TURN IGNITION SWITCH TO THE ON POSITION
- SLIDE CHOKE LEVER TO THE ON/CHOKE POSITION
- GRIP RECOIL STARTER AND PULL BRISKLY
- ONCE STARTED RETURN CHOKE LEVER TO THE OFF/RUN POSITION.
- LET ENGINE STABILIZE BEFORE HOOKING UP ANY ELECTRICAL APPLIANCES

ELECTRIC START

- BE SURE UNIT IS AT A LEVEL, WELL VENTILATED POSITION
- CHECK FLUIDS FOR PROPER LEVELS.
- TURN ON FUEL VALVE. (FIGURE #3)
- SLIDE CHOKE LEVER TO THE ON/CHOKE POSITION
- TURN THE IGNITION KEY TO THE "START" POSITION.
- ONCE ENGINE HAS STARTED, RETURN THE KEY TO THE "ON" POSITION.
- RETURN CHOKE TO OFF/RUN POSITION.
- LET ENGINE STABILIZE AND WARM UP FOR AT LEAST 3 MINUTES BEFORE ATTACHING ANY APPLIANCES.
- MAKE SURE DEVICES TO BE CONNECTED ARE IN GOOD WORKING ORDER AND IN THE "OFF" POSITION BEFORE CONNECTING TO THE GENERATOR.

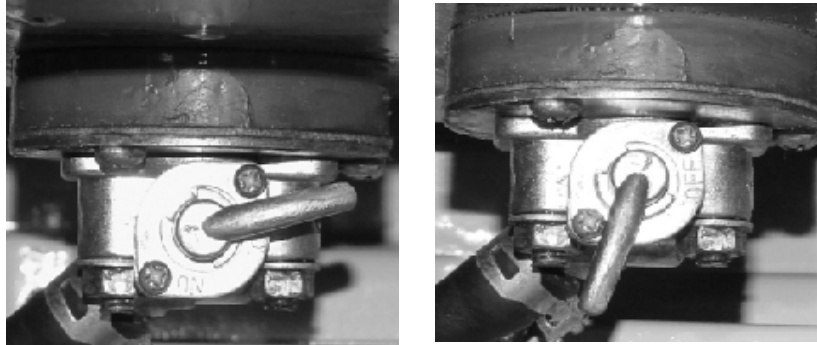
STOPPING THE ENGINE

- TURN OFF ALL ELECTRICAL DEVICES CONNECTED TO THE GENERATOR.
- **WARNING: DO NOT START OR STOP GENERATOR WITH ELECTRICAL DEVICES PLUGGED IN.**
- ALLOW THE GENERATOR ENGINE TO RUN AT A 'NO LOAD' CONDITION FOR SEVERAL MINUTES TO STABILIZE INTERNAL ENGINE TEMPERATURE BEFORE STOPPING.
- TURN THE KEY ON THE CONTROL PANEL TO THE "OFF" POSITION.
- TURN FUEL VALVE TO THE "OFF" POSITION.
- KEEP THE GENERATOR CLEAN AND DRY. USE A DAMP CLOTH TO CLEAN EXTERIOR SURFACES. REMOVE CAKED ON DIRT WITH A SOFT BRUSH.
- NEVER SPRAY WITH WATER. WATER WILL CAUSE ELECTRICAL SHORTS IN THE ELECTRICAL SYSTEM



Fuel tank should never be filled indoors. Avoid spilling fuel on hot engine and allow engine to cool completely before fueling. Never fill fuel tank when engine is running or when hot. Do not light a cigarette or smoke when filling the fuel tank. Gasoline vapors are highly explosive.

Figure #3



GASOLINE GENERATOR ENGINES REQUIRE 38 OUNCES OF 10W/30 TYPE API SJ or HIGHER

MAINTENANCE SCHEDULE

		DAILY	MONTHLY	3 MONTHS	6 MONTHS
	Check Air Filter	x			
	Check For Oil Leaks	x	x		
	Replace Air Filter				x
	Change Oil			x	

*First oil change should be after 5 hours. After initial break-in period change oil every (30) hours.

⚠ DANGER

Stored batteries give off explosive hydrogen gas while recharging. An explosive mixture will remain around the battery for a period of time after it has completed recharging. Any spark can ignite the hydrogen and cause an explosion. Such an explosion can shatter the battery and cause blindness or other serious injury.

⚠ DANGER

Avoid smoking, open flames, sparks or any other source of heat around a battery. Wear protective goggles, rubber apron and rubber gloves when working around a battery. Battery electrolyte fluids is an extremely corrosive sulfuric acid solution than can cause severe burns. If a spill occurs, immediately flush with clear water.

TROUBLESHOOTING

Problem	Cause	Solution
Engine is running but no power output is available.	<ol style="list-style-type: none"> 1. Circuit breaker is open. 2. Poor connection or defective cord set. 3. Connected device is bad. 4. Fault in generator. 	<ol style="list-style-type: none"> 1. Reset the circuit breaker. 2. Check & repair. 3. Connect another device that is in good condition. 4. Contact service center.
Engine runs good until loads are connected, then bogs down.	<ol style="list-style-type: none"> 1. Short circuit in a connected load. 2. Overloaded generator. 3. Engine speed is too slow. 4. Short in generator circuit. 	<ol style="list-style-type: none"> 1. Disconnect shorted load. 2. See 'Connecting electrical loads' section of manual. 3. Contact service center. 4. Contact service center.
Engine will not start or engine starts but runs rough.	<ol style="list-style-type: none"> 1. On/Off Switch is turned 'OFF'. 2. Battery is dead 3. Fuel Valve is "OFF" 4. Dirty air cleaner. 5. Out of fuel. 6. Stale fuel. 7. Not enough speed or force is used for recoil start. 8. Water in fuel. 9. Speed control is not set to "Run". 10. Low Oil Level 11. Fouled plug or faulty ignition system. 12. Engine has lost compression. 	<ol style="list-style-type: none"> 1. Turn On/Off Switch to 'On'. 2. Charge or replace it. 3. Rotate Fuel Valve to the "ON" position. 4. Clean air filter 5. Fill fuel tank. 6. Drain fuel tank and refill. 7. Read and follow directions. 8. Drain and refill tank. 9. Move speed control to "Run" position. 10. Add oil to proper level. 11. Check for spark, contact Customer Service. 12. Contact service center
Engine shuts down during Operation.	<ol style="list-style-type: none"> 1. Out of fuel. 2. Fault in engine. 3. Low oil level. 4. Fouled plug or faulty ignition system. 	<ol style="list-style-type: none"> 1. Fill fuel tank. 2. Contact service center. 3. Add oil to proper level. 4. Check for spark, contact Customer Service.
Engine lacks power	<ol style="list-style-type: none"> 1. Load is too high. 2. Dirty air filter. 3. Engine needs to be serviced. 	<ol style="list-style-type: none"> 1. See 'Connecting electrical loads' section of manual. 2. Replace the air filter. 3. Contact service center.

DANGER

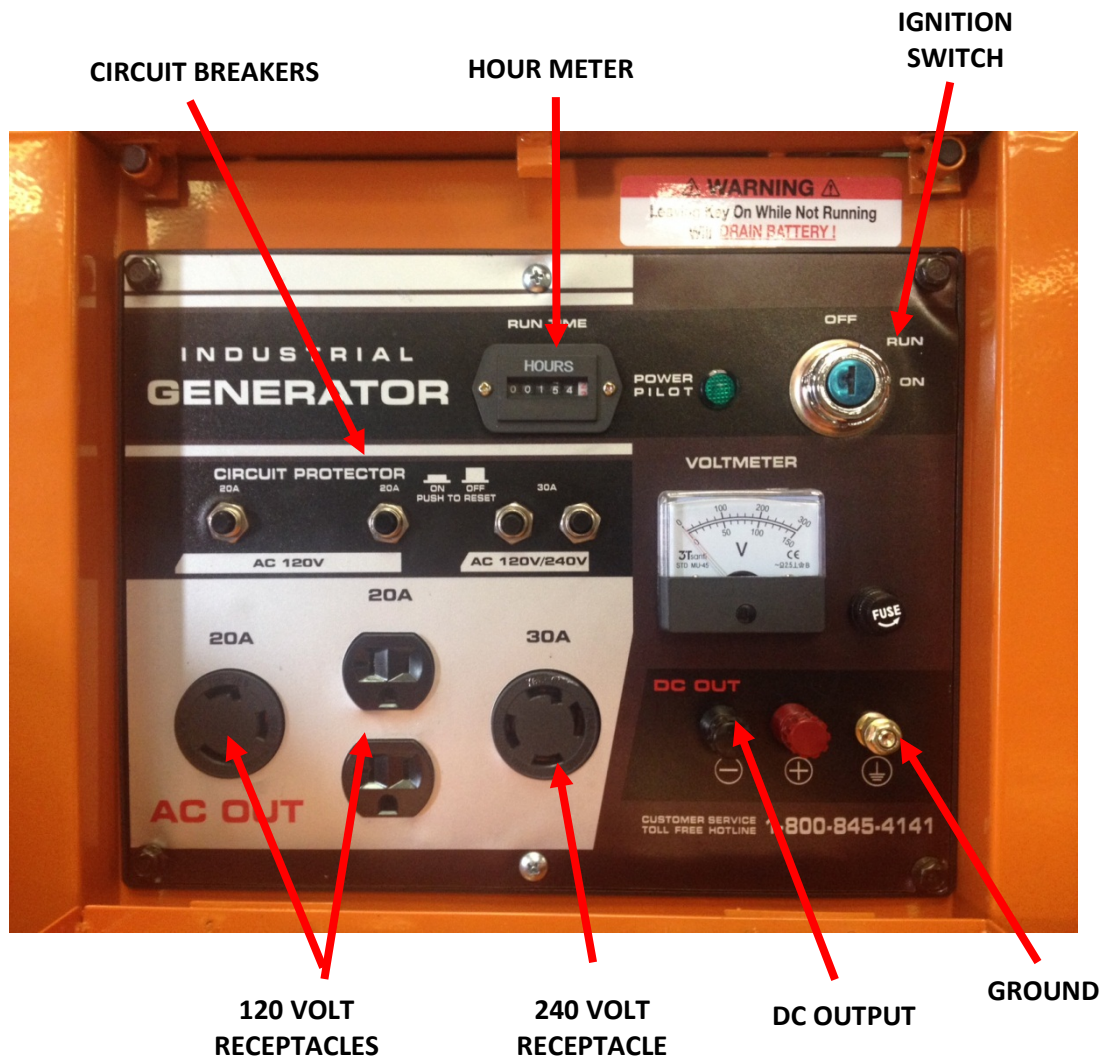
When working on the generator, always disconnect cable from the battery. Also disconnect spark plus wire from spark plug. Keep the wire away from the spark plug.

NEVER cover the generator while engine and exhaust areas are warm.

CAUTION

Hot oil may cause burns. Allow engine to cool before draining oil. Avoid prolonged or repeated skin exposure with used oil. Thoroughly wash exposed areas with soap.

CONTROL PANEL



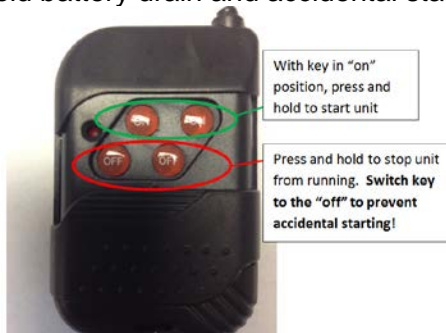
Remote Starting

The ignition key has to be in the run position to operate the remote.



WARNING Battery Drain

When the unit is not operating always keep the ignition key in the "OFF" position to avoid battery drain and accidental starting!



WARRANTY

American Fab equipment is warranted to be free from defects in material and workmanship for a period of ONE year after date of purchase. The engine is warranted for a period of two years. See engine manual for details.



SPECIFICATIONS

Max Output 8400 watts
120v 20 amp
Receptacle
1- L14-30 Receptacle
1- L14-30 Auxiliary plug
Circuit Breaker Protection
74 Db. @ 10'
Electric Start \ Manual Recoil
420cc Gasoline Engine
Steel Sleeve Cylinder
12.3 Gallon Fuel Tank
Approx. Run Time 24 hrs @ 50%
Load

Rpm: 3600
Copper Windings
Single Phase 60Hz
Low Oil Shut Down
Oil Capacity 32 oz
12v DC Connector
Size: L-29" W-30" H-31"
Net Weight: 360lb
Lockable Toolbox Compartments
Hex Key Locks
Engine Warranty – 2 years
Equipment Warranty – 1 year
Battery- 230 CCA Lawn and
Garden battery

Manufactured by:
American Fab Inc.
P.O. Box 1027
Travelers Rest, SC 29690
Customer Service: 1-800-845-4141